



**REDCON**  
STEEL

REDCON STEEL

# Company Profile

One of REDCON Group's subsidiaries

2023

STRENGTH IN EVERY STRUCTURE



INDEX

# Table of Contents

- 04** **About us**  
Summary about REDCON STEEL
- 06** **Board of Directors**  
Strategic Leaders, Exceptional Vision
- 14** **What we do**  
Our services and products
- 23** **Our Projects**  
Showcase of some of our featured projects
- 44** **Success Partners**  
Empowering Success Together

Dive into REDCON STEEL's achievements, exceptional services, steel products, diverse projects, , and seamless contact options.





REDCON STEEL

# Summary About us

- ✓ REDCON STEEL is one of REDCON Group's subsidiaries.
- ✓ REDCON STEEL is a leading company in metal works of all kinds such as Steel Structures, Plate Works, Temporary site office (caravans), handrails, fences, garbage chutes for its commercial products and over head cranes.
- ✓ REDCON STEEL characterizes with high quality and sustainability of its products.
- ✓ REDCON STEEL maintains full customer satisfaction on the product, which contributed to the adoption of the central workshop by the largest Consultants in Egypt

## Contacts

Follow us for more

+20 100 009 9162

info@redconsteel.com



[www.redconsteel.com](http://www.redconsteel.com)



# Mission

# Vision

REDCON STEEL seeks to enter the steel industry with its products that ensure high quality and longevity. We offer a variety of product lines including residential industrial.

We strive to develop relationships with our customers, suppliers and employees that are as efficient and long lasting as the product we sell through:

- 1- Premier customer service.
- 2- Operational excellence.
- 3- Deliver business results.

REDCON STEEL aims to be the preferred choice for steel fabrication and erection solutions. We lead our industry by providing the best value in products, services and solutions to our customers.



# Board of Directors

REDCON STEEL

Guiding our journey with diverse expertise, our dedicated board drives innovation, growth, and excellence.



Eng. Tarek El-gamal  
Chairman



Mr.  
Amal Abdelwahed  
Vice Chairman



Mr.  
Ahmed Abdallah  
Vice Chairman



Eng.  
Omar El-gamal  
CEO





**Eng.  
Tarek El-gamal**  
Chairman

With over 40 years of experience in construction development, El Gamal owned his expertise in management and innovation. As a Civil Engineering graduate, he brings a strong educational foundation to his leadership role. El Gamal is a certified consultant in "Total Quality Management (TQM)" and has completed programs in Leadership Excellence as well as the Latest Technological Developments in the field of Construction & Energy Efficiency. He is committed to staying at the forefront of the industry.

As one of the visionary leaders in the Egyptian business landscape, El Gamal serves as a board member of some governmental companies. He is a former founding board member of the Administrative Capital for Urban Development. Furthermore, he actively contributes as a board member to the Ministry of Transportation for Investments and Projects, the largest Transit-Oriented Development (TOD) developer in Egypt. Eng. El Gamal's influence extends beyond national borders. He holds positions as a board member in eight international chambers and councils, where he contributes his insights and expertise to the global business community. His dedication to innovation and leadership has solidified his reputation as a prominent figure in the construction and development industry.



**Eng.**  
**Amal Abdelwahed**  
CEO

With a distinguished career spanning over 30 years in finance and management, Mr. Amal Abdel Wahed is a seasoned expert in revenue enhancement, cost control, financial analysis, corporate governance and investment evaluation. Throughout his career, Mr. Amal has been guided by unwavering commitment and business ethics. As a board member and co-founder of more than 10 companies across various sectors, he has consistently upheld these values. His exceptional acumen and dedication have contributed significantly to the success of these enterprises.

At REDCON Construction, Mr. Amal plays a pivotal role as the CEO. He has been instrumental in shaping the company's growth strategy and orchestrating internal restructuring efforts. With a keen focus on profitability and precision, he is responsible for planning and implementing strategies that drive the company's success.

Mr. Amal Abdel Wahed's leadership and expertise have been instrumental in shaping REDCON Construction's trajectory. His dedication to integrity and excellence continues to drive the company's pursuit of success.



**Eng.  
Ahmed Abdallah**  
Vice Chairman

Mr. Ahmed Abdallah is a distinguished senior executive with a dynamic 30-year career, marked by exceptional achievements in the realms of investment and strategic leadership within the Finance and Private Equity industry. As the Vice Chairman, he brings a wealth of expertise and a track record of successful ventures.

With an impressive background, Mr. Ahmed is managing the investment portfolio of CIIC, one of the prominent investment banks in Egypt. Notably, his strategic acumen has consistently delivered remarkable results, generating above-market returns with an IRR of approximately 25%. Mr. Ahmed's influence extends across a diverse range of industries. His commitment to effective leadership is demonstrated through his involvement as a board member in over 10 companies, both domestically and internationally. His strategic insights and expertise contribute to the growth and success of these enterprises.

As a Vice Chairman, Mr. Ahmed Abdallah's results-driven approach, extensive industry knowledge, and strong leadership skills play a crucial role in steering the company's strategic direction. His achievements and commitment embody the core values of REDCON, making him an invaluable asset to the company's continued growth and success.



**Eng.**  
**Omar El-gamal**  
CEO

With a solid educational background in Mechanical Engineering from The American University in Cairo and the University of Houston, Eng. Omar ElGamal has cultivated a remarkable journey in the industry.

His hands-on experience includes roles such as a Coiled Tubing Engineer and Job Supervisor at SLB Schlumberger, where he showcased his expertise in various locations globally. Eng. ElGamal's proficiency extends beyond the field, as he gained insights into manufacturing processes during his tenure as a Manufacturing Engineer at Schlumberger's Sugar Land, Texas facility.

Transitioning to REDCON Construction in 2020, he excelled as a Project Coordinator before assuming the role of Supply Chain Director in 2027. Eng. Omar ElGamal's multidimensional expertise, coupled with his strategic leadership skills, positions him as a driving force in shaping the future of engineering and construction.



“If you want to go fast, go alone. If you want to go far, go together.

"We are not only providing professional products for customers, but also good and permanent service.”

**Maraee Medhat**

General Manager of REDCON STEEL

REDCON STEEL

# Thoughts from the Top



REDCON STEEL



# Timeline

2014

REDCON STEEL was established in 2014 in order to ensure the maintenance of company's scaffolding and to meet the requirements of REDCON sites' mobilization as well as support the company in cost optimization.

2016

Later in 2016, the work shop completed successfully steel structures for chillers, elevators, and handrails in plots 84 (Audi's Bank) and ABC Bank in the 5th settlement.

2019

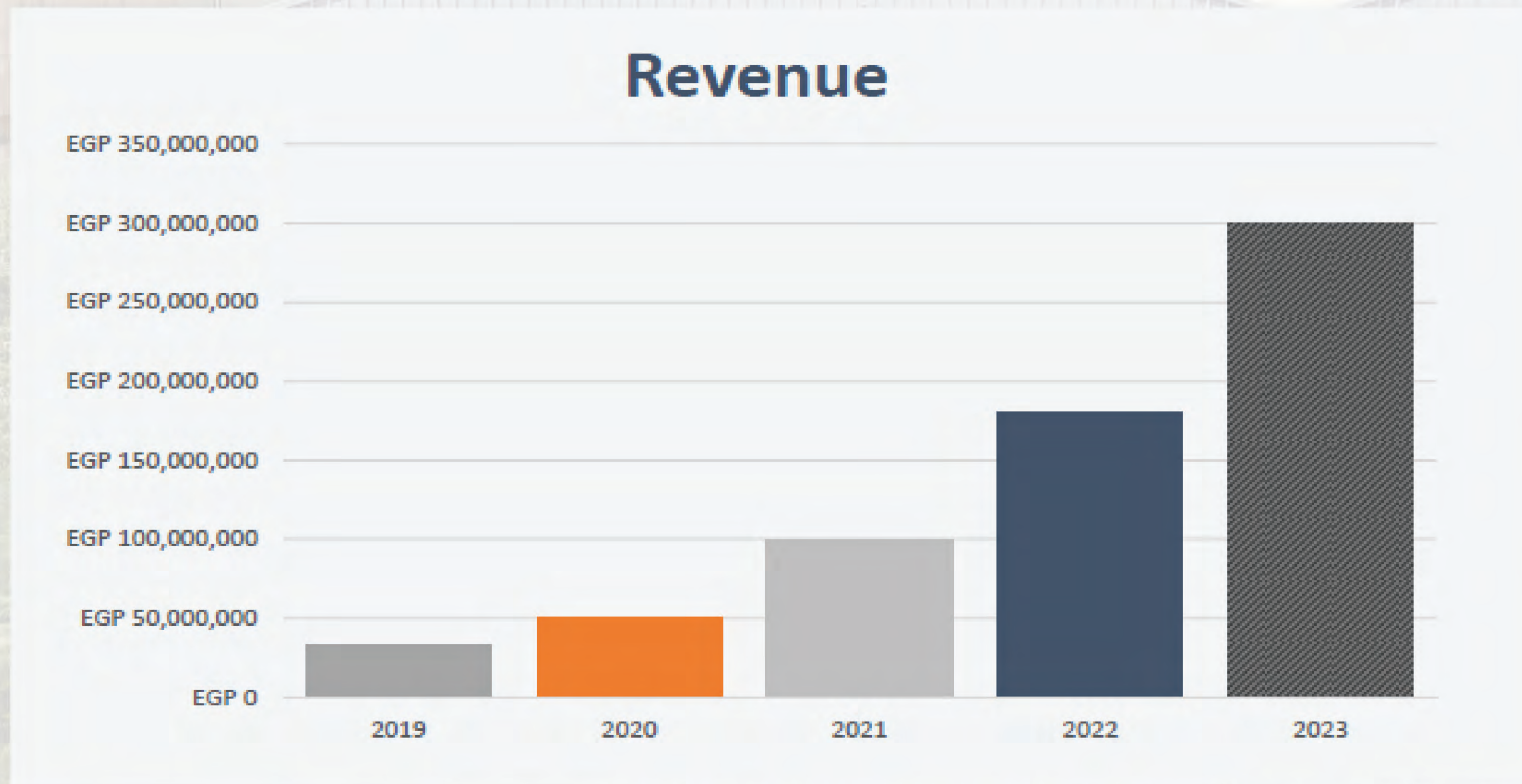
in 2019 the work shop was separated from the scaffolding business unit to be operated as standalone unit and late in 2023 as a company

REDCON STEEL

REDCON STEEL

# Timeline

The average annual revenues of REDCON Steel has significantly increase since inception to reach almost EGP 200 M per year in 2022. REDCON Steel Capacity grew from 300 Ton to 12,000 Ton per year with a total human capital of almost 160 employee and technician. REDCON Steel has a rigorous plan for growth in 2023 with an additional revenue of almost 50 % from its achievements in 2022.



REDCON STEEL

REDCON STEEL

# What we do

- ✓ Preparation of construction shop drawing, Designs, 3D modeling of project.
- ✓ Preparation of calculation sheet.
- ✓ Fabrication of the product with high quality and minimum cost.
- ✓ Finishing the product with required specifications.
- ✓ Fixing the product in site with skilled labors.

In the end, REDCON STEEL always care about customer satisfaction and seeking to reach the highest level of quality

Services





# Products

## Steel: Superior Quality

- ✓ Steel Structure building
- ✓ Access Hatches
- ✓ Garbage Chutes
- ✓ Temporary Offices (Caravans)
- ✓ Fences
- ✓ HANDRAILS
- ✓ Parking Shades

PRODUCT 01

# Steel Structure

## Forging Strong Foundations

Steel structures, the epitome of modern engineering, blend strength and versatility seamlessly. Resilient frameworks for architectural marvels, industrial powerhouses, and more, our steel structures stand as icons of durability, precision, and limitless possibilities in construction.



Products



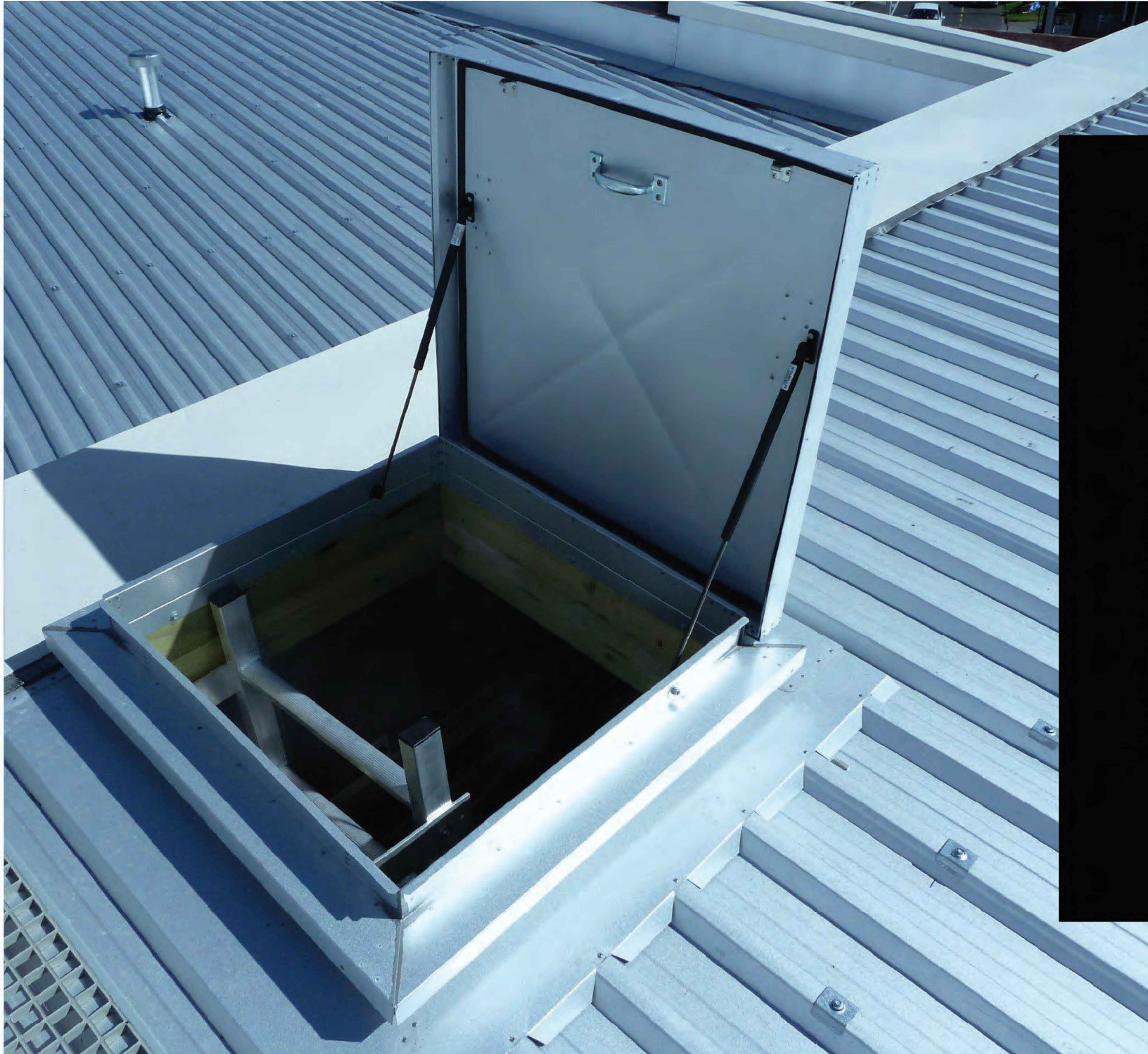


PRODUCTS 02

# Garbage Chutes

## Waste Managed, Hassle-Free

Our garbage chutes introduce efficiency to waste disposal. Designed for seamless integration, they offer a hygienic and convenient solution. From residential to commercial spaces, our chutes ensure waste management is both discreet and effortless.



Products

PRODUCT 03

# Access Hatches

## Gateway to Accessibility

Our access hatches redefine convenience, providing secure yet effortless entry points. Crafted with precision, they seamlessly blend function with aesthetics, enriching spaces with easy access while maintaining utmost safety and durability.





PRODUCTS 04

# Caravans

## Temporary Offices

Our Temporary Offices (Caravans) offer indispensable solutions tailored for ongoing construction sites. Flexibility meets functionality, providing on-site workstations that adapt seamlessly to project demands.

These mobile sanctuaries ensure operational efficiency, making them a cornerstone for any construction endeavor.

PRODUCT 05

# Fences

## Boundaries Crafted Beautifully

Our fences redefine security and aesthetics. Melding strength and elegance, they demarcate spaces with a touch of sophistication. From residential perimeters to industrial compounds, our steel fences stand as guardians of safety and style.



Products



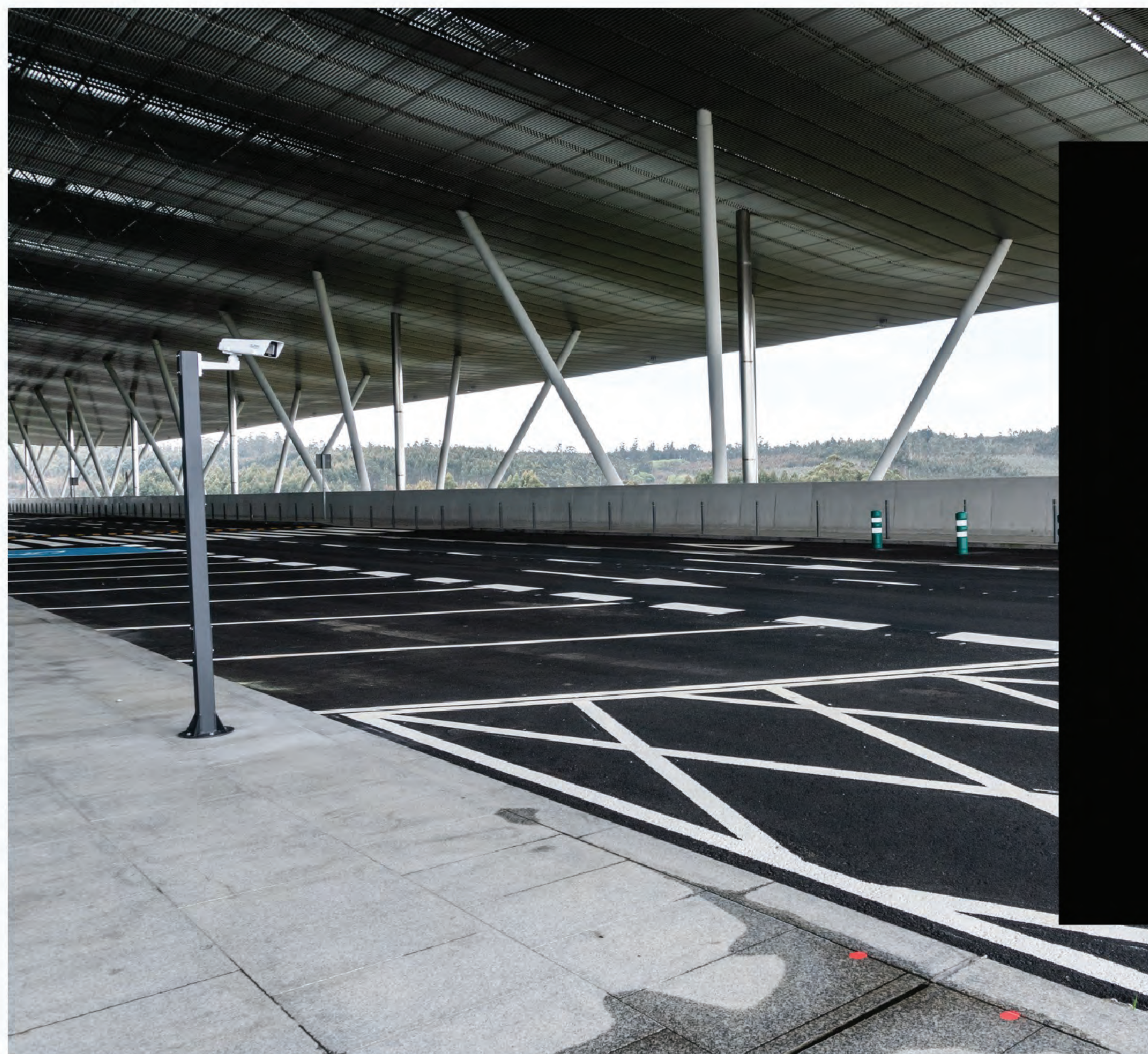


PRODUCTS 06

# Handrails

## Guiding with Elegance

Our handrails epitomize safety intertwined with design precision. From staircases to walkways, these steel guardians ensure stability while enhancing architectural aesthetics. Functionality and elegance unite, making our handrails essential companions for every journey.



# Products

PRODUCT 07

# Parking Shades

## Shading Solutions

Engineered for protection and style, our parking shades combine steel strength and innovative design to create versatile and reliable shelter solutions for vehicles.





REDCON STEEL FEATURED 

# Projects

## Elevating Excellence & Diversity

Our portfolio stands tall, a true embodiment of triumph. From residential havens to industrial landmarks, educational sanctuaries to commercial marvels, our projects encompass diverse sectors across the nation. Each structure reflects our prowess as a steel manufacturer, providing bespoke steel products that harmonize seamlessly with each unique project, shaping a landscape of boundless accomplishment.

2023



NORTH COAST

# The Gate Tower

## Project details

Owner : NUCA (New Urban Communities Authority)

Progress : On-going

Scope of work :

Steel Structure building

Access Hatches

Garbage Chutes

Handrails

2023





NORTH COAST

# Latin District

## Project details

Owner : NUCA (New Urban Communities Authority)

Progress : On-going



## Scope of work

Steel Structure building

Access Hatches

Garbage Chutes

Handrails

Temporary Offices (Caravans)





NORTH COAST

# Alamein University

## Project details

Owner : NUCA (New Urban  
Communities Authority)

Progress : On-going

Scope of work :  
Steel Structure  
Access Hatches  
Garbage Chutes  
Handrails  
Fences





NEW CAPITAL

**R05**

# Residential

## Project details

Owner : NUCA (New Urban Communities Authority)

Progress : On-going



## Scope of work

Handrails  
Access Hatches  
Garbage Chutes  
Doors





NEW CAPITAL  
**Central  
Park**

**Project details**

Owner : NUCA (New Urban  
Communities Authority)

Progress : On-going

Scope of work :  
Handrails  
Access Hatches  
Garbage Chutes  
Temporary Offices (Caravans)  
Fences  
Steel Shades





6TH OF OCTOBER CITY

# ZED Towers

## Project details

Owner : ORA Developments

Progress : On-going



## Scope of work

Handrails  
Access Hatches  
Garbage Chutes  
Doors





CAIRO

# Maspero Towers

## Project details

Owner : NUCA (New Urban Communities Authority)

Progress : On-going

Scope of work :  
Handrails  
Access Hatches  
Garbage Chutes  
Fences





6TH OF OCTOBER CITY

# Badya

## Project details

Owner : Palm Hills Developments

Progress : On-going



## Scope of work

Handrails  
Access Hatches  
Garbage Chutes  
Doors





CAIRO

# Magra Al-Eyon

## Project details

Owner : NUCA (New Urban  
Communities Authority)

Progress : On-going

Scope of work :  
Handrails  
Access Hatches  
Garbage Chutes  
Fences





NEW CAPITAL

# Belle Vie

## Project details

Owner : EMAAR MISR

Progress : On-going



## Scope of work

Handrails  
Access Hatches  
Garbage Chutes  
Doors







REDCON STEEL

# Success Partners

Our journey thrives through collaboration. Meet the exceptional partners who fuel our shared accomplishments.



HERE WE GO!  
**Thank You**  
2023

### Contacts

Follow us for more

+2 01000099162

info@redconsteel.com



[www.redconsteel.com](http://www.redconsteel.com)